



What's new for Silverblue, Kinoite, Sericea and Onyx in Fedora 39

Fedora 39 Release Party 🎉

Timothée Ravier

Fedora Silverblue & Kinoite maintainer

Joshua Strobl

Budgie developer & Fedora Onyx maintainer



What's new?

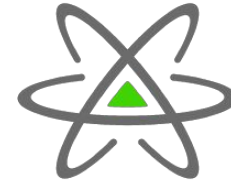


Welcome to Fedora Onyx!



- Using the Budgie desktop, with a (nearly) stock experience.
- Follows up on Fedora Budgie Spin introduced in 38.
- Similar to other Fedora atomic desktops. Ships toolbox out-of-the-box and access to Flatpaks.
- Hopeful rebrand from Onyx to “Fedora Budgie Atomic”.
- Aspirational: Have atomic variant be *the* “Fedora Budgie” and have the “mutable” spin be rebranded. 🙌

Fedora Atomic Desktops



- New Special Interest Group focused on (rpm-)ostree based desktop variants of Fedora:
 - Silverblue, Kinoite, Sericea, Onyx
 - <https://fedoraproject.org/wiki/SIGs/AtomicDesktops>
- New name still pending approval by the Fedora Council:
 - <https://fedoraproject.org/wiki/Changes/AtomicDesktops>
- Will centralize work and issues in a GitLab namespace:
 - SIG: <https://gitlab.com/fedora/ostree>
 - Issues: <https://gitlab.com/fedora/ostree/sig/-/issues>

What's new in Silverblue?



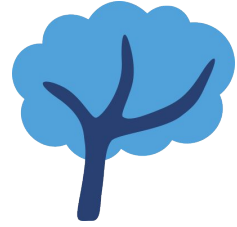
- Latest GNOME 45 release!
- Loupe replaces Eye of GNOME (EOG)
- Flatpaks for ppc64le available and included in the installer
- See also [What's new in Fedora Workstation 39](#) on the Fedora Magazine

What's new in Kinoite?



- Still on Plasma 5.27 (Plasma 6 coming for Fedora 40!)
- A subset of KDE Apps now available as Flatpaks
 - Built from Fedora RPM sources and build options
- Available for all Fedora releases
- Thanks to Yaakov Selkowitz and the Flatpak SIG!
- Applications removed from the base image
 - Okular, Gwenview, Kcalc

What's new in Sericea?



- No major changes this release 😊



rpm-ostree unified-core

- Builds now using with rpm-ostree unified-core
- Stricter build mode for rpm-ostree images
- Should be completely transparent to users
- Required for bootupd support
- Step towards ostree native container images





What's next?



bootupd support

- Will let users finally easily update their bootloader
- Needed rpm-ostree unified core mode (landed in F39)
- Now waiting on Anaconda installer fixes ([in progress!](#))
- Hopefully lands in Fedora 40 🙌

Ostree Native Containers (I)

- Package ostree commits as OCI containers
- Main benefits:
 - Easier to manage, deploy, mirror
 - Create derived images via a Containerfile/Dockerfile
 - Inspect the content, scan it or run it like a container
 - Signing via cosign/sigstore
- Examples:
 - <https://github.com/coreos/layering-examples>
 - <https://github.com/travier/fedora-kinoite>



Ostree Native Containers (II)

- Work in progress to add support to build via Pungi
- Initially built alongside the current ostree commits
- Currently planned for Fedora 40:
 - <https://fedoraproject.org/wiki/Changes/OstreeNativeContainerStable>
 - The change page needs to be updated / rewritten
- Looking at transition to containers only in a future release

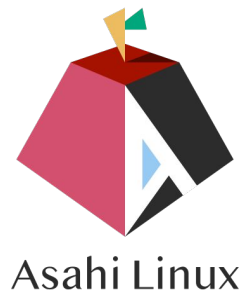


Universal Blue, Bluefin and Bazzite



- Builds on the Ostream Native Containers format
- All defined via Containerfiles/Dockerfiles
- Lots of options, images, additional fixes, platform support, UX fixes, etc.
- General project: <https://universal-blue.org/>
- Developer focused: <https://projectbluefin.io/>
- Gaming focused: <https://github.com/ublock-os/bazzite/>

Support for Asahi Linux?



- Help us make that happen!
- <https://github.com/OSInside/kiwi/issues/38>
- <https://fedora-asahi-remix.org/>



Call for contributors!



Where to reach us?

- Atomic Desktops SIG:
 - Wiki: [Atomic Desktops](#)
 - Tracker: gitlab.com/fedora/ostree/sig
 - [#atomic-desktops:fedoraproject.org](#)
- Desktop SIGs:
 - [Workstation Working Group](#), [KDE SIG](#), [Sway](#), [Budgie](#)
- Matrix rooms:
 - [#silverblue:fedoraproject.org](#)
 - [#kinoite:fedoraproject.org](#)
 - [#sway:fedoraproject.org](#)
 - [#budgie:fedoraproject.org](#)

